

SETUP GUIDE



Haltech Platinum Sport ECU to CD Dash

Supported Devices

Platinum Sport 1000 ECU
Platinum Sport 2000 ECU

CAN Bus Wiring

AEM CD has 2 separate CAN ports. For 3rd party devices, AEM recommends you use AEM CAN Bus 2, whose connections are contained in a 2 pin Deutsch DTM connector. On older harnesses it may be in an unterminated, twisted/shielded flying lead in the dash harness.

Platinum Sport Plug-In ECU's

Haltech CAN Hi (Pin 7) → AEM CD "CAN 2" Pin 1 (CAN 2+),
Gray wire in twisted/shielded pair

Haltech CAN Lo (Pin 3) → AEM CD "CAN 2" Pin 2 (CAN 2-),
Black wire in twisted/shielded pair

Follow Haltech instructions to determine if you need a terminating resistor at the ECU.



CAN CONNECTOR ON REAR OF ECU

ECU Software Setup

To use the V2 protocol, the ECU must be running version 1.11 and later. Open ECU Manager and select; Setup | Main Setup, then under CAN Mode: select "Haltech CAN (Version 2)"

SETUP GUIDE



Supported Channels

The Haltech V2 protocol transmits up to 103 unique channels and the CD-7 supports all of them.
Note: Not all Haltech ECU's will transmit values on all channels

CH	CD7 Channel Name
1	AFR1
2	AFR1LongTermFuelTrim
3	AFR1ShortTermFuelTrim
4	AFR2
5	AFR2LongTermFuelTrim
6	AFR2ShortTermFuelTrim
7	AFR3
8	AFR4
9	AmbientAirTemp
10	AntilagActiveState
11	AntilagFuelEnrich
12	AntilagIgnRetardOffset
13	AntilagSwitchStatus
14	BaroPress
15	BoostControlOutput
16	BoostControlTarget
17	BrakePress
18	BrakeSwitchState
19	CamExhaustBank1Pos
20	CamExhaustBank2Pos
21	CamIntakeBank1Pos
22	CamIntakeBank2Pos
23	ClutchSwitchState
24	CoolantPress
25	CoolantTemp
26	DifferentialOilTemp
27	ECU_HomeCounter
28	ECU_MissCount
29	ECU_TriggerCounter
30	ECU_TriggersSinceLastHome
31	ECUBatteryVoltage
32	EngineProtectionState
33	EngineSpeed
34	EngineSpeedAuxLimitState
35	EngineSpeedRateofChange
36	ExhaustTemp1

CH	CD7 Channel Name
53	FuelEthanolContent
54	FuelInjDutyPrimary
55	FuelInjDutySecondary
56	FuelMassFlow DiffRate
57	FuelMassFlow Rate
58	FuelMassFlow ReturnRate
59	FuelPress
60	FuelTemp
61	GearboxTemp
62	GearPosCalculated
63	GearShiftCutState
64	GearShiftSwitchState
65	IgnitionTiming
66	IgnitionTiming_Trailing
67	IndicatorBatteryState
68	IndicatorHighBeamState
69	IndicatorLeftTurnState
70	IndicatorParkingBrakeState
71	IndicatorRightTurnState
72	IntakeManifoldAirPress
73	IntakeManifoldAirPress2
74	IntakeManifoldAirTemp
75	KnockBank1IgnOffset
76	KnockBank2IgnOffset
77	KnockLevelLogged
78	KnockLevelLogged2
79	MILState
80	NitrousBottlePress
81	NitrousOutputState
82	NitrousSwitchState
83	OilPress
84	OilTemp
85	RallyAntiLagSwitchState
86	ThrottlePedalPos
87	ThrottlePos
88	TimedDutyOutputDuty1

SETUP GUIDE



CH	CD7 Channel Name
37	ExhaustTemp2
38	ExhaustTemp3
39	ExhaustTemp4
40	ExhaustTemp5
41	ExhaustTemp6
42	ExhaustTemp7
43	ExhaustTemp8
44	ExhaustTemp9
45	ExhaustTemp10
46	ExhaustTemp11
47	ExhaustTemp12
48	FuelAccelPumpState
49	FuelConsumptionRate
50	FuelCut
51	FuelDecelCutState
52	FuelEconomyAverage

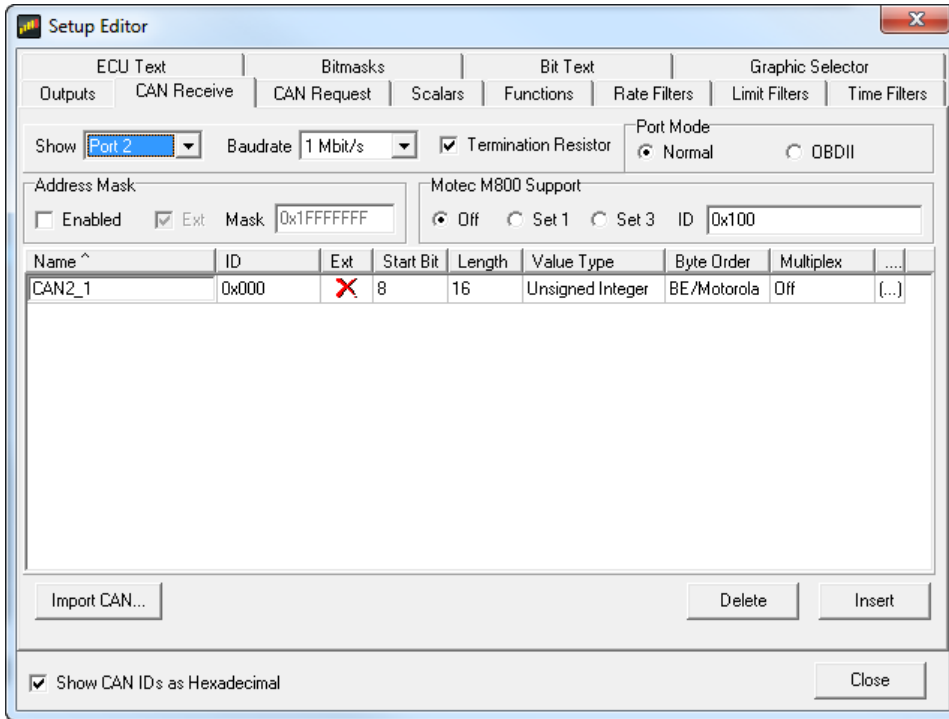
CH	CD7 Channel Name
89	TimedDutyOutputDuty2
90	TimedDutyOutputState
91	TracControlCutState
92	TracControlSlipMeasured
93	TracControlTorqueReduceState
94	TurboSpeed
95	VehicleSpeed
96	WastegatePress
97	WheelSpeedAvgFront
98	WheelSpeedAvgRear
99	WheelSpeedDifference
100	WheelSpeedFrontLeft
101	WheelSpeedFrontRight
102	WheelSpeedRearLeft
103	WheelSpeedRearRight

Layout Overview & CAN Setup

You can either start with a new dash layout by selecting "File" then "New" in DashDesign or you can select from a pre-designed layout that has screens already designed and inserted but has the CAN inputs left blank. These are chosen by selecting "File" then "Open" and selecting one of the setups titled xzyblank.aemcd7 with the xyz representing a description of the layouts contained in the file.

To import the CAN setup you select SETUP then DISPLAY from the main DashDisplay menu. Once the dialog box opens you select the "CAN Receive" tab.

SETUP GUIDE



Change the settings to the following:

Show: "Port 2"

Baudrate: 1 Mbit/s

Termination Resistor: "ON"

Address Mask: "OFF"

M800 Support: "OFF"

Then click on "Import CAN" on the lower left and select the can setup file. The new items will appear in the Outputs tab. They can now be viewed on the display or logged. You can rename, filter, or manipulate any of these channels to make them more useful.