

## *DTAFast ECUs to CD Dash*

### Supported Devices

**S40 Pro ECU running V 79.04 and later**  
**S60 Pro ECU running V 79.04 and later**  
**S80 Pro ECU running V 79.04 and later**  
**S100 Pro ECU running V 79.04 and later**

### CAN Bus Wiring

AEM CD has 2 separate CAN ports. For 3rd party devices, AEM recommends you use AEM CAN Bus 2, whose connections are contained in a 2 pin Deutsch DTM connector. On older harnesses it may be in an unterminated, twisted/shielded flying lead in the dash harness.

DTA CAN Hi → AEM CD "CAN 2" Pin 1 (CAN 2+), Gray wire in twisted/shielded pair  
DTA CAN Lo → AEM CD "CAN 2" Pin 2 (CAN 2-), Black wire in twisted/shielded pair

### ECU Software Setup

Please follow the DTAFast ECU instructions for enabling the CAN data stream if necessary.

### Supported Channels

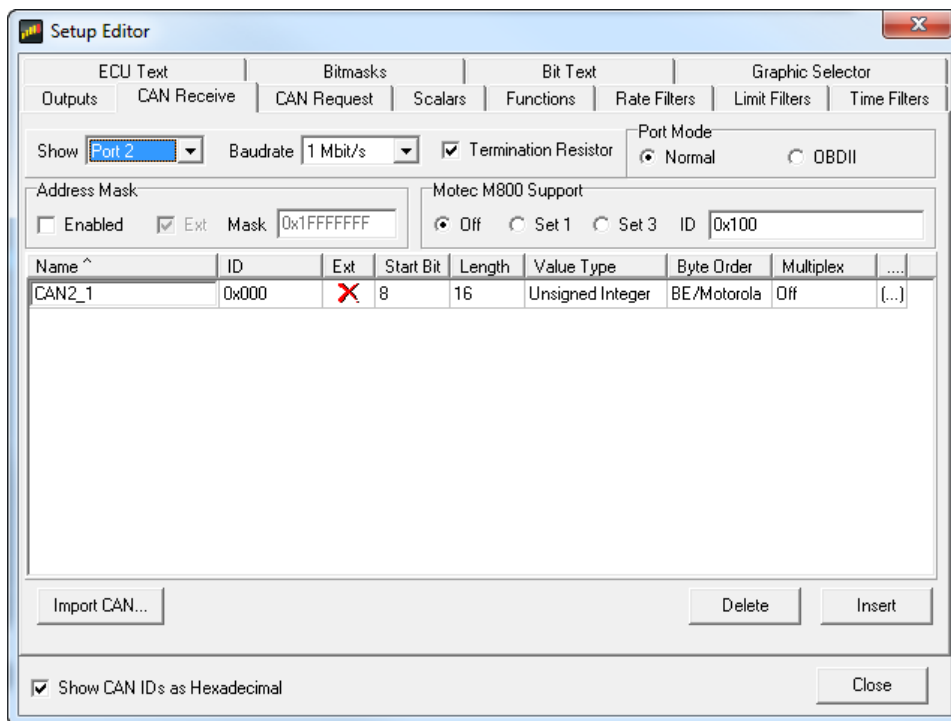
AEM supports the following 30 channels transmitted by the DTAFast ECUs:

AFR	AFR_PIDAdjust	AFR_PIDTarget
Cam1Output	Cam1Position	Cam1Target
Cam2Output	Cam2Position	Cam2Target
CamErrors	CoolantTemp	CrankErrors
ECUAnalogInput1Voltage	ECUAnalogInput2Voltage	ECUAnalogInput3Voltage
ECUBatteryVoltage	EngineSpeed	FuelConsumptionRate
FuelEconomyAverage	FuelInjDutyPrimary	FuelInjPulsewidth
FuelPress	GearPosCalculated	IgnitionTiming
IntakeManifoldAirPress	IntakeManifoldAirTemp	OilPress
OilTemp	ThrottlePos	VehicleSpeed

## Layout Overview & CAN Setup

You can either start with a new dash layout by selecting “File” then “New” in DashDesign or you can select from a pre-designed layout that has screens already designed and inserted but has the CAN inputs left blank. These are chosen by selecting “File” then “Open” and selecting one of the setups titled xzyblank.aemcd7 with the xyz representing a description of the layouts contained in the file.

To import the CAN setup you select SETUP then DISPLAY from the main DashDisplay menu. Once the dialog box opens you select the “CAN Receive” tab.



Change the settings to the following:

**Show:** “Port 2”

**Baudrate:** 1 Mbit/s

**Termination Resistor:** “ON”

**Address Mask:** “OFF”

**M800 Support:** “OFF”

Then click on “Import CAN” on the lower left and select the can setup file. The new items will appear in the Outputs tab. They can now be viewed on the display or logged. You can rename, filter, or manipulate any of these channels to make them more useful.